

Cognitive Assistance Toilet Seat

SET - UP AND OPERATION

The BetterLiving Cognitive Assistance Toilet Seat is made of quality Duroplast material and features Stainless Steel Hardware which can be attached to the toilet pan via top or bottom fixing method.

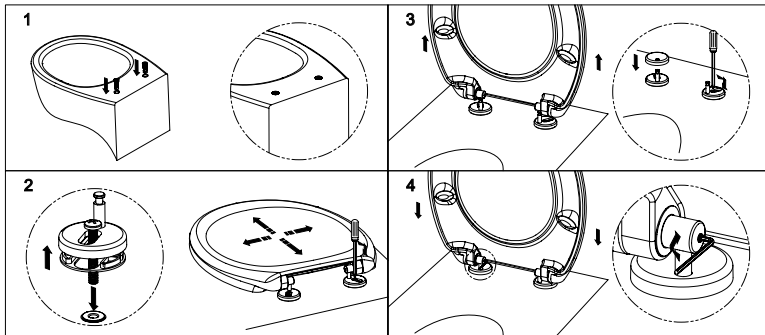


It's universal design means it is compatible with most toilets and the vibrant blue colour provides assistance to those with vision impairment or cognitive difficulties.

Installation

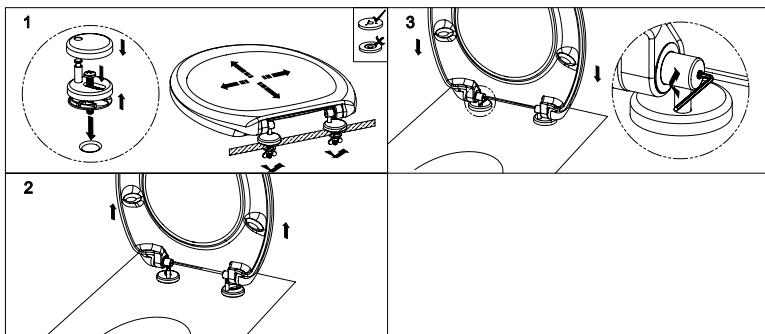
Installation method depends on the type of toilet pan that the toilet seat is being fitted to. If the toilet pan has a modern concealed or hidden fixing system where the hinge is only accessible from the top, refer to Method 1. If the toilet pan has access to the hinge fixing points from underneath, refer to Method 2.

Method 1: Top Fixing



Note: When using Method 1, there will be no requirement of the two (2) washers and wing nuts

Method 2: Bottom Fixing



Note: When using Method 2, there will be no requirement of the two (2) plastic pan hole plugs

Regular maintenance

The toilet seat should be inspected regularly to ensure the pan attachment hinges are securely tightened to the pan and the seat and seat lid is securely attached to the pan attachments. These fixings can be easily tightened using a screwdriver and/or hex key.

Care & cleaning

To clean the seat after each use, wipe with a mild soap and warm water solution and rinse well. Dry with a clean cloth. For heavier soiling, wipe clean with a diluted bleach solution and rinse well before drying. Do not use water temperatures in excess of 80°C. Avoid harsh, abrasive cleaning agents or utensils (such as a wire brush) as these can lead to deterioration of the seat.

Specifications

CODE	BL0032
COLOUR	Blue
MAXIMUM USER WEIGHT	175 kg
OVERALL LENGTH	440 mm
OVERALL WIDTH	376 mm
OVERALL HEIGHT	58 mm
OPENING LENGTH	281 mm
OPENING WIDTH	232 mm
CENTER DISTANCE BETWEEN PAN HOLES	170-190 mm
WIDTH BETWEEN HINGE POSTS	143 mm
FIXING METHOD	Top or Bottom
ARTG	176831
WARRANTY	1 year

WARRANTY STATEMENT

Limited Warranty

This warranty is provided by Novis Healthcare (ABN 45 102 735 491) of Unit 12, 12 Mars Road, Lane Cove NSW 2066

Novis Healthcare (Novis) products are manufactured to the highest quality standards and are thoroughly tested and inspected before leaving our factory. In addition to any statutory rights and remedies you may have, Novis warrants all of its products sold directly or via an Authorised Novis Australia Dealer against defective workmanship and faulty materials from the date of purchase by the end user for a period of twelve months unless otherwise specified for that product and its components.

Warranty Claims

To claim under this warranty, please contact Novis Healthcare and have your receipt or proof of purchase available. Novis Healthcare may need to assess the defect before determining any claim, and additional information may be requested to process your claim. Claims without proof of purchase may not be able to be processed.

Novis Healthcare may at its option inspect the goods on site or require them to be returned to its premises or one of its Authorised Service Agents in person or freight prepaid by you.

Novis will undertake at its option, to repair or replace, free of charge, each product or part thereof on the condition that:

- The product found on examination, to be suffering from a manufacturing defect;
- The product or relevant part has been serviced regularly by Novis or one of its Authorised Service Agents and has not been subjected to misuse, neglect or been involved in an accident;
- The repairs are not required as part of normal wear and tear.
- At our option
- Goods repaired may be replaced by refurbished good of the same type rather than being repaired.
- Refurbished parts may be used to repair goods.

Novis Healthcare will not be held responsible for any repair other than those carried out by it or one of its Authorised Service Agents.

Warranty repairs do not extend the length of the warranty period.

Limited Liabilities

Our liability under this manufacturer's warranty is subject to us being satisfied that a defect was caused by faulty parts, manufacture or workmanship, and was not caused or substantially contributed to by other factors or circumstances beyond our control, including (but not limited to) defective installation, maintenance or repair, product modification or alteration, any neglect, misuse, or excessive use, normal wear and tear or failure to follow manufacturer's instructions.

IMPORTANT NOTICE FOR AUSTRALIAN CONSUMERS:

Our goods come with guarantees that cannot be excluded under the Australian Consumer Law. You are entitled to a replacement or refund for a major failure and for compensation for any other reasonably foreseeable loss or damage. You are also entitled to have the goods repaired or replaced if the goods fail to be of acceptable quality and the failure does not amount to a major failure. To obtain compensation, you will need to provide documentary evidence of the loss or damage suffered and documentary evidence that such loss or damage was a reasonable foreseeable consequence of a failure. Novis Healthcare to comply with a consumer guarantee under the Australian Consumer Law. Subject to the provisions of the Australian Consumer Law, Novis Healthcare excludes, to the fullest extent permitted by law, all liability in respect of loss of profit or other economic loss, direct to indirect or consequential, special, general or other damages or other expenses or costs which may include negligence.